

East Sussex County Council Planning Committee 14 August 2019

Page 1

eastsussex.gov.uk

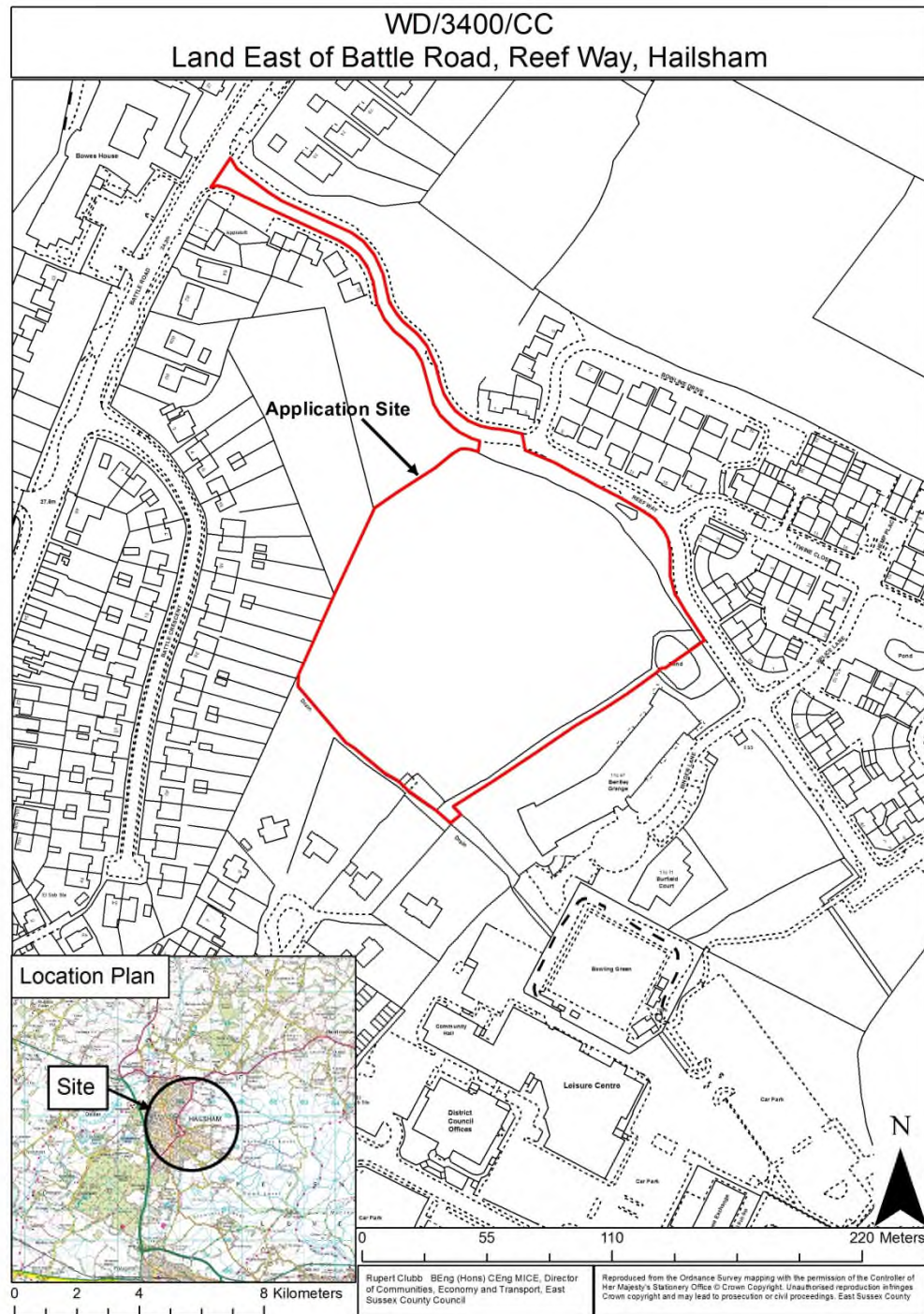


Agenda Item 5

WD/3400/CC

Full planning application for construction of a part 2-storey, part 3-storey new 80 place co-educational SEMH (Social, Emotion, Mental Health) Special School including provision of hard and soft landscaping, perimeter fencing, car parking and other associated works including slope regrading, a new electric sub-station and a new access from Reef Way

Known as Land East of Battle Road, Reef Way, Hailsham

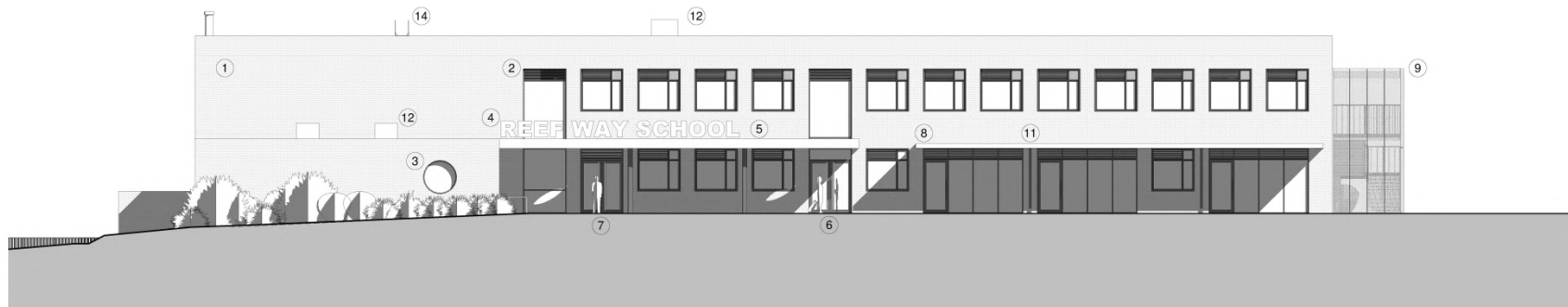


WD/3400/CC
Land East of Battle Road, Reef Way, Hailsham

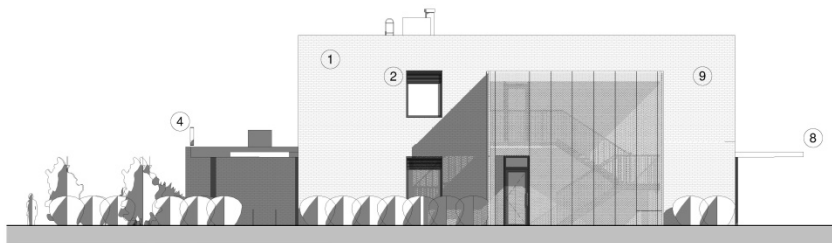


5





1 Proposed South West Elevation
1 : 100



2 Proposed South East Elevation
1 : 100

Material Key:

1. Brick system with PPC aluminium coping - (Light grey/buff textured multistock brick, grey coping)
2. PPC aluminium windows with matching PPC aluminium louvres, window trim & cill - (Grey). Look-a-like glazed infill panels.
3. Feature window to PE Hall - (Grey)
4. Feature metal signage - (Silver)
5. PPC aluminium fascia to main entrance canopy - (Grey)
6. Main/Primary entrance
7. Secondary entrance
8. Polycarbonate play canopy - (Grey)
9. Metal mesh enclosure to external stair (Silver)
10. Brick lobby to PE Hall - (Light grey/buff textured multistock brick)
11. PPC Aluminium anti-climb RWP's - (Grey)
12. PPC Aluminium natural ventilation chimneys - (Grey)

NOTES:

- Wording to feature signage to main entrance canopy indicative only
- Landscaping indicative only, see Landscape Consultant's information

Rev	Date	Revision Details	Dr	Ch
P6	27.06.19	Elevation Titles updated	MT	EC
P5	04.04.19	Planning Issue	MT	EC
P4	20.03.19	Draft Planning Issue	MT	EC
P3	20.02.19	Stage 2 Issue	MT	EC
P2	21.02.19	WPP Issue for Open Planning	MT	EC
P1	20.02.19	WPP Issue	MT	EC
P0	01.02.19	Stage 2 Approval WPP	SK	EC

London: 78 Great Suffolk Street, London, SE1 0SL
T 020 7626 2773 E london@eceaarchitecture.com
Sussex: Brooklyn Chambers, 11 Goring Road, Broomfield, West Sussex, BN12 6AP
T 01903 248777 E sussex@eceaarchitecture.com
Bristol: Wickenden, Colston Tower, Colston Street, Bristol, BS1 4XE
T 0117 214 1101 E bristol@eceaarchitecture.com

ECE Architecture
www.eceaarchitecture.com

CAD File Date: 27/06/2019 11:38:10

Job Title
Reef Way SEMH School

Drawing Title
Proposed Elevations
Sheet 1

Scale
1:100 @ A1 / 1:200 @ A3

0 2 4 6 8 10

Drawn
EC

Checked
MT

Date
30/10/18

Project
6667

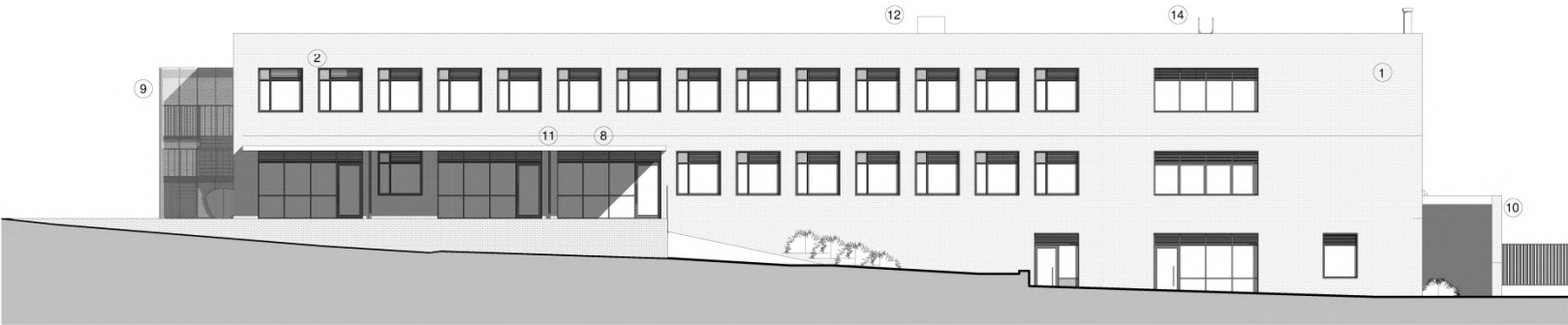
Status
P6

APPROVAL

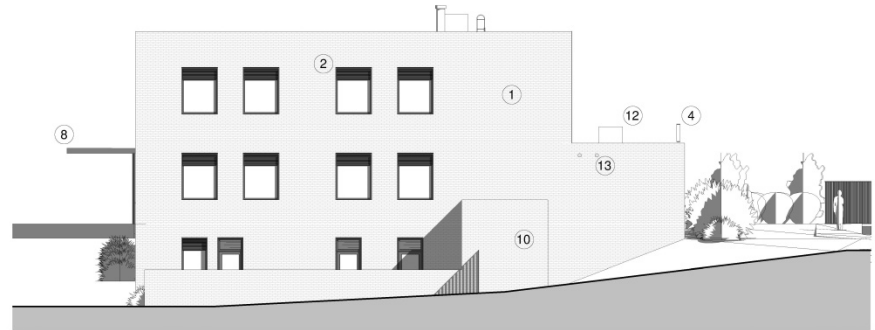
CDM 2015 Health & Safety Information

This information relates only to Signage and Hazard identified on this drawing and is to be read in conjunction with the Designer's Risk Assessment Register.
© ECE Architecture Limited. No drawings to be copied from drawing master for the purpose of Planning Applications. The contractor should check all dimensions on site. It is the contractor's responsibility to ensure compliance with Building Regulations.





1 Proposed East Elevation
1 : 100



2 Proposed North Elevation
1 : 100

- Material Key:**
- 1. Brick system with PPC aluminium coping - (Light grey/buff textured multistock brick, grey coping)
 - 2. PPC aluminium windows with matching PPC aluminium louvres, window trim & cill - (Grey). Look-a-like glazed infill panels.
 - 3. Feature window to PE Hall - (Grey)
 - 4. Feature metal signage - (Silver)
 - 5. PPC aluminium fascia to main entrance canopy - (Grey)
 - 6. Main/Primary entrance
 - 7. Secondary entrance
 - 8. Polycarbonate play canopy - (Grey)
 - 9. Metal mesh enclosure to external stair (Silver)
 - 10. Brick lobby to PE Hall - (Light grey/buff textured multistock brick)
 - 11. PPC Aluminium anti-climb RWP's - (Grey)
 - 12. PPC Aluminium natural ventilation chimneys - (Grey)
 - 13. Ladder fixing points (stainless steel eye bolts)

- NOTES:**
- Wording to feature signage to main entrance canopy indicative only
 - Landscaping indicative only, see Landscape Consultant's information

Rev	Date	Revision Details	Dr	Ch
P6	27.06.19	Elevation Titles updated	MT	EC
P5	04.04.19	Planning Issue	MT	EC
P4	20.03.19	Draw Planning Issue	MT	EC
P3	05.02.19	Stage 2 Issue	MT	EC
P2	21.02.19	WFP Issue for Open Planning	MT	EC
P1	20.02.19	WFP Issue	MT	EC
P0	01.02.19	Stage 2 Approval WFP	SK	EC

London: 78 Great Suffolk Street, London, SE1 0SL
T 020 7628 2773 E london@eceaarchitecture.com
Sussex: Brooklyn Chambers, 11 Goring Road, Brighton, West Sussex, BN1 2AAP
T 01302 248777 E sussex@eceaarchitecture.com
Bristol: Wickenden, Colston Tower, Colston Street, Bristol, BS1 4XE
T 0117 214 1101 E bristol@eceaarchitecture.com
ECE Architecture
www.eceaarchitecture.com

Job Title
Reef Way SEMH School

Drawing Title
Proposed Elevations
Sheet 2

Scale
1:100 @ A1 / 1:200 @ A3

Drawn
EC

Checked
MT

Date
30/10/18

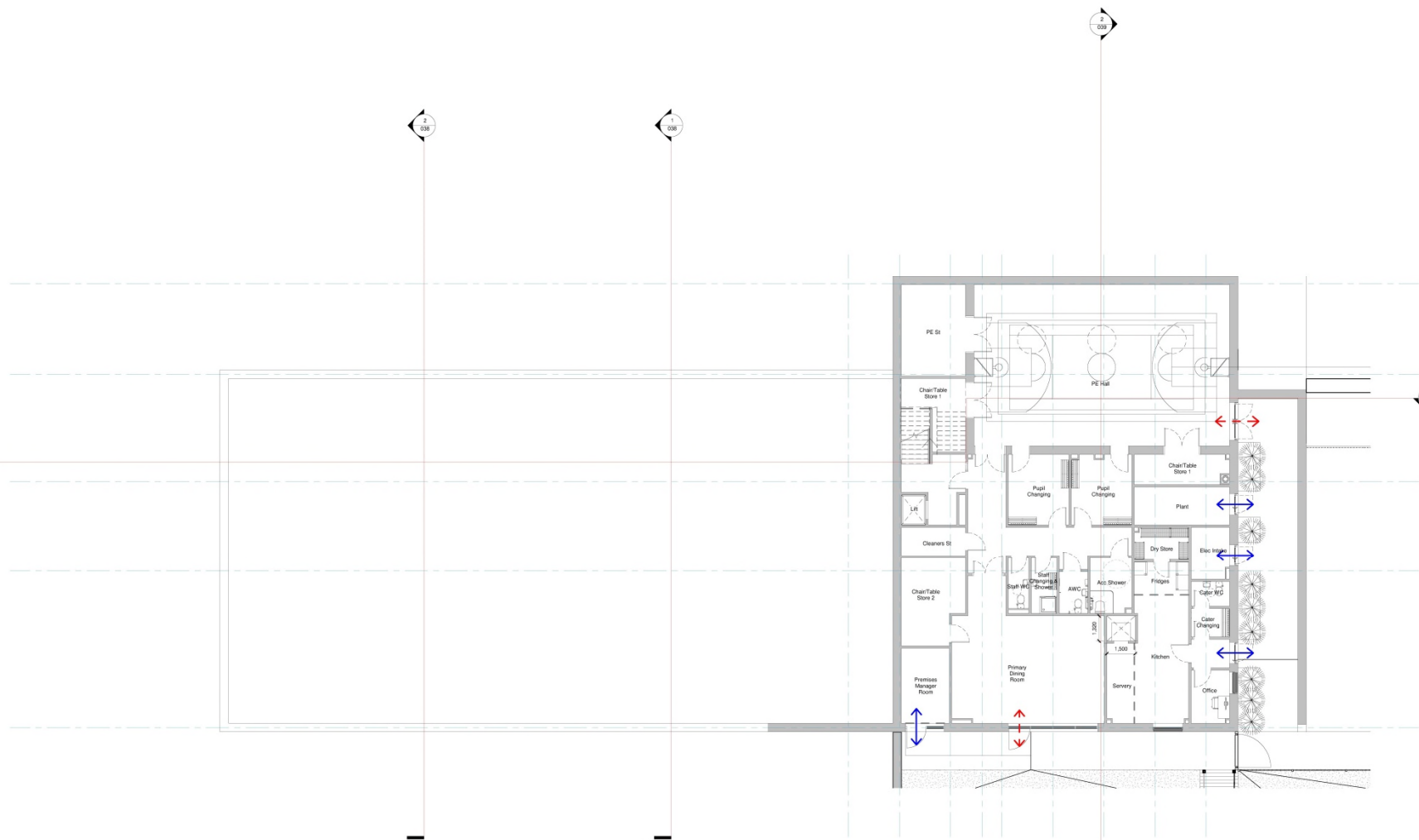
Project
6667

Drawing No
035

Rev
P6

APPROVAL

Plan showing lower ground floor layout



GIA Hall Level: 401 sqm
Total GIA: 2210 sqm

- NOTE:**
- Managed wheelchair escape via dining if required
 - Chair Store half height in area under landing.
 - FF&E indicative only.



Job Title
Reef Way SEMH School

Drawing Title
Proposed Lower Ground Floor Plan 00

Scale
1:100 @ A1 / 1:200 @ A3

Drawn
EC

Checked
MT

Date
05/12/18

Project
6667

Drawing No
030

Rev
P9

APPROVAL

Rev	Date	Revision Details	Dr	Ch
P0	04.04.18	Planning Issue	MT	EC
P6	09.03.18	Draft Planning Issue	MT	EC
P7	20.02.18	Stage 2 Issue	MT	EC
P8	27.02.18	WIP Issue for Open Planning	MT	EC
P9	20.02.18	WIP Issue	MT	EC
P4	08.02.18	Work in Progress Issue	MT	EC
P3	01.02.18	Stage 2 Approval WIP	OK	EC
P2	20.01.18	GIA Plans Updated WIP	MT	EC
P1	11.12.18	Preliminary Issue	MT	EC
P0	07.12.18	Preliminary Issue	MT	EC

ECE Architecture
www.ecearchitecture.com

London: 78 Great Suffolk Street, London, SE1 0SL
T 020 7628 2773 E london@ecearchitecture.com
Sussex: Brooklyn Chambers, 11 Goring Road, Worthing, West Sussex, BN12 6AP
T 01903 248777 E sussex@ecearchitecture.com
Bristol: Wickenden, Colston Tower, Colston Street, Bristol, BS1 4XE
T 0117 214 1101 E bristol@ecearchitecture.com

9

[illegible]

 London: 76 Great Suffolk Street,
London, SE1 8BL
T: 020 7909 2773 E: london@ecearchitecture.com
Surrey: Brooklands Chambers, 11 Goring Road,
Woking, West Sussex, BN12 4AP
T: 01903 248777 E: surrey@ecearchitecture.com
Bristol: Westwards, Colston Tower,
Colston Street, Bristol, BS1 4XE
T: 0117 214 1101 E: bristol@ecewestwards.com

ECE Architecture
www.ecearchitecture.com



Page 10

[illegible]

CAD File Date: 04/04/2019 13:06:13

APPROVAL

Plan showing section of site frontage (3) and an east to west site section (2)

11



2 Proposed Street Elevation A-A
1 : 250



3 Proposed Street Elevation B-B
1 : 250

NOTES:
- Landscape indicative only.
See landscape consultant info.



Job Title
Reef Way SEMH School

Drawing Title
Proposed Street Elevations

Scale
1:250 @ A1 / 1:500 @ A3

0 5 10 20 25
metres

Drawn	Checked	Date
EC	MT	29/03/19
Project	Drawing No	Rev
6667	040	P1
Status		

APPROVAL

P1	04.04.19	Planning Issue	MT	EC
P0	29.03.19	Draft Planning Issue	MT	EC
Rev	Date	Revision Details	Dr	Ch



London: 78 Great Suffolk Street, London, SE1 6SL
T 020 7629 2773 E london@eceaarchitecture.com
Sussex: Brooklyn Chambers, 11 Goring Road, Worthing, West Sussex, BN12 6AP
T 01903 248777 E sussex@eceaarchitecture.com
Bristol: Wickham, Colston Tower, Colston Street, Bristol, BS1 4XE
T 0117 214 1101 E bristol@eceaarchitecture.com
www.eceaarchitecture.com

CDM 2015 Health & Safety Information

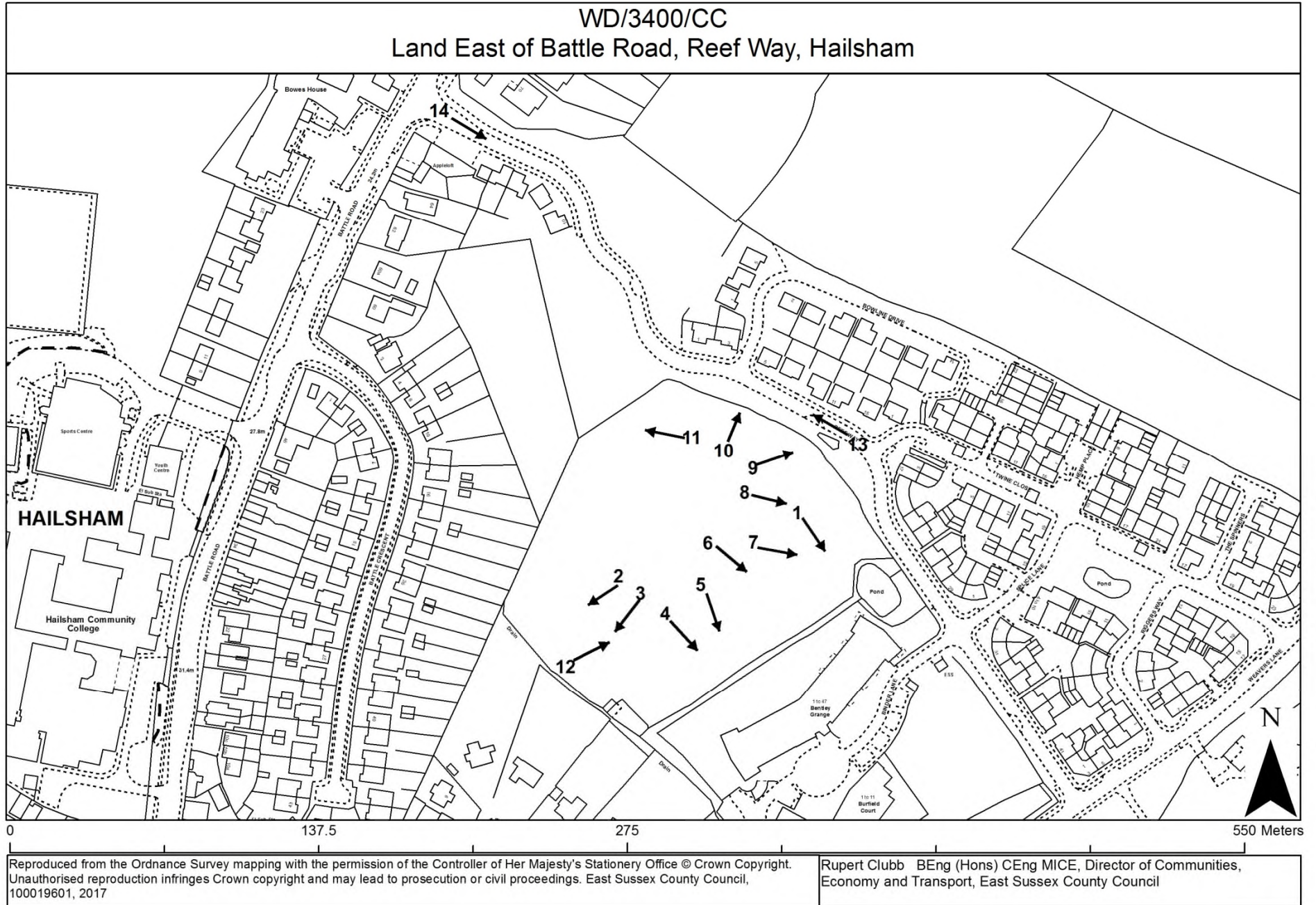
This information relates only to Signage and is not to be read in conjunction with the Designer's Risk Assessment Register.

© ECE Architecture Limited. No dimensions from drawing except for the purpose of Planning Applications. The contractor should check all dimensions on site. It is the contractor's responsibility to ensure compliance with Building Regulations.

Plan showing locations the site photographs were taken

12

Page 12



View 1. Looking towards the south-eastern corner of the site.



View 2. Looking south-west towards the back of properties on St Wilfred's Green.



View 3. Looking towards the south-western boundary of the site.



View 4. View looking towards the southern boundary.



View 5. Another view of southern boundary of the site.



View 6. Looking towards south-eastern corner of the site.



View 7. South eastern boundary treatment, with properties on Reef Way visible.



View 8. View of eastern boundary of the site. Properties on Reef Way.



View 9. Another view of the eastern boundary of the site.



View 10. North-eastern boundary of the site.



View 11. North-west boundary of the site.



View 12. View looking across the site from the west, towards south-eastern boundary.



View 13. Frontage of the site on Reef Way.



View 14. Northern end of Reef Way from Battle Road.



WD/3400/CC

Full planning application for construction of a part 2-storey, part 3-storey new 80 place co-educational SEMH (Social, Emotion, Mental Health) Special School including provision of hard and soft landscaping, perimeter fencing, car parking and other associated works including slope regrading, a new electric sub-station and a new access from Reef Way

Known as Land East of Battle Road, Reef Way, Hailsham

This page is intentionally left blank

Development Management Matters:

Quarterly Development Management Update Report by the
Director of Communities, Economy & Transport

Development Management Matters – Quarterly Update

1st April – 30th June 2019

Enforcement

New cases received:	18
Total cases resolved: (15 new cases, 3 older cases)	18
Outstanding cases being investigated:	11

Site Monitoring

Non-chargeable site monitoring visits:	25
Chargeable site monitoring visits:	0

Development Management Matters:

Quarterly Development Management Update Report by the
Director of Communities, Economy & Transport

East Sussex County Council Planning Committee 14 August 2019

Page 32